

HANGER BEARINGS

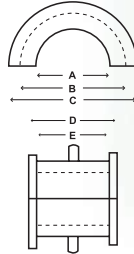
For Screw Conveyors

SCREW CONVEYOR HANGER BEARINGS

STYLE "A" BEARING: STYLE 226

Two-piece double flange bearing for screw conveyor hanger with formed strap.
This hanger bearing is interchangeable with the following styles: 20A, 20B, 26B, 28A, 30, 50, 220, 226 228 and 326.

| STYLE A: DIMENSIONS | | | | |
|---------------------|--------|---------|---------|--------|
| A | B | C | D | E |
| 1-1/2 | 2-3/16 | 2-1/2 | 1-7/8 | 1-9/16 |
| 2 | 2-3/4 | 3-1/8 | 1-15/16 | 1-9/16 |
| 2-7/16 | 3-1/4 | 3-11/16 | 2-15/16 | 2-3/8 |
| 3 | 4 | 4-3/8 | 2-15/16 | 2-1/4 |
| 3-7/16 | 4-3/4 | 5 | 3-3/16 | 3-1/16 |







* Tolerances: + 1/16" / - 0"

Other sizes available on request. Hanger strap not included.



AVAILABLE MATERIALS

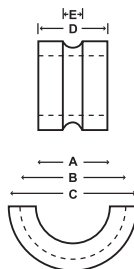
| | PLASTECH | WEARITE* | UHMW | WOOD |
|------------------------------------|---|---|---|---|
| MAXI-LIFT HANGER BEARINGS |  |  |  |  |
| MATERIAL | Engineered Nylon Resin | Engineered Nylon Resin | Polyethylene | Maple |
| GRADE | Food Grade, FDA | Industrial Grade | Food Grade, FDA | Industrial Grade |
| METHOD OF MANUFACTURE | Injection Molded | Injection Molded | Machined Or Molded | Machined |
| TEMPERATURE OPERATING RANGE | -60°F To +300°F | -60°F To +300°F | -22°F To +180°F | -50°F To +160°F |
| LUBRICANT | Built-In Lubricant | Built-In Lubricant* | Natural | Oil Impregnated |
| COLOR | Tan | Black | White | Brown |

* Wearite bearings available drilled and tapped for lubing or purging pipes at additional cost.

STYLE "B" BEARING: STYLE 18B

Cap type half bearing for screw conveyor hanger with U-bolt construction. Hanger Styles 17, 18, 18A, 18B, 19B and 40.
Available in wood and UHMW.

| STYLE B: DIMENSIONS | | | | |
|---------------------|--------|---------|---------|-------|
| A | B | C | D | E |
| 3 | 3-7/8 | 4-13/16 | 2-7/8 | 13/16 |
| 3-7/16 | 4-7/16 | 5-3/8 | 3-13/16 | 7/8 |



* Tolerances: + 1/16" / - 0"

Other sizes available on request.
Hanger strap not included.

