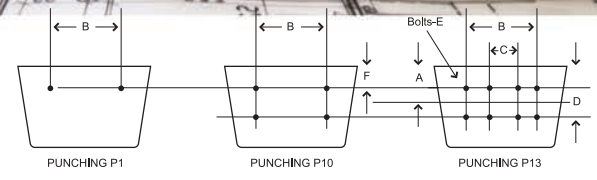


BUCKET PUNCHING: CHAINS

Call 1-800-527-0657, Visit MAXILIFT.COM for More Info

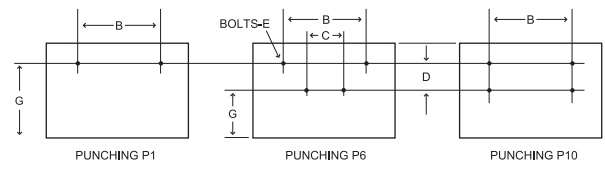


PUNCHING: CENTRIFUGAL DISCHARGE ELEVATOR BUCKETS ON "K" ATTACHMENTS

CHAIN ATTACHMENT NUMBER	NOMINAL BUCKET SIZE, INCHES						PUNCHING	INCHES					
	TYPES AA, AA-RB		TYPE AC		TYPE SC			A	B	C	D	E	F
	Min.	Max.	Min.	Max.	Min.	Max.							
77-K1	6 x 4	10 x 6	-	-	8 x 6	10 x 8	P1	-	3	-	-	1/4	1
77-K2	6 x 4	10 x 6	-	-	8 x 6	10 x 8	P10	-	3	-	13/16	1/4	1
C 77-K1	6 x 4	10 x 6	-	-	8 x 6	10 x 8	P1	-	3	-	-	3/8	1
78-K1	6 x 4	10 x 6	-	-	8 x 6	10 x 8	P1	-	3-3/8	-	-	1/4	1
H 78-K1	6 x 4	12 x 6	-	-	8 x 6	12 x 8	P1	-	4	-	-	3/8	1
H 78-K2	6 x 4	12 x 6	-	-	8 x 6	12 x 8	P10	-	4	-	1-1/8	3/8	1
C 102B-K2	8 x 5	16 x 7	-	-	8 x 6	16 x 8	P10	-	5-5/16	-	1-3/4	3/8	1
SS 102B-K2	7 x 4-1/2	16 x 7	-	-	8 x 6	16 x 8	P10	-	5-5/16	-	1-3/4	3/8	1
C 102-1/2-K2	8 x 5	16 x 7	-	-	8 x 6	16 x 8	P10	-	5-5/16	-	1-3/4	1/2	1
SS 102-1/2-K2	8 x 5	16 x 7	-	-	8 x 6	16 x 8	P10	-	5-5/16	-	1-3/4	1/2	1
C 110-K2	8 x 5	16 x 7	-	-	8 x 6	16 x 8	P10	-	5-5/16	-	1-3/4	3/8	1
SS 110-K2	8 x 5	16 x 7	-	-	8 x 6	16 x 8	P10	-	5-5/16	-	1-3/4	3/8	1
C111-K2	9 x 6	18 x 8	-	-	10 x 8	16 x 8	P10	-	6-1/4	-	2-5/16	1/2	1
SS 111-K2	10 x 6	18 x 8	-	-	10 x 8	16 x 8	P10	-	6-1/4	-	2-5/16	1/2	1
C 132-K2	12 x 6	20 x 8	-	-	12 x 8	16 x 8	P10	-	7-1/2	-	2-3/4	1/2	1
188-K1	6 x 4	12 x 6	-	-	8 x 6	12 x 6	P1	-	3-3/4	-	-	3/8	1
C 188-K2	6 x 4	14 x 7	-	-	8 x 6	14 x 8	P10	-	4-3/16	-	1-1/4	5/16	1
SS 188-K1	6 x 4	12 x 6	-	-	8 x 6	12 x 8	P1	-	3-3/4	-	-	3/8	1
SS 188-K2	8 x 5	14 x 7	-	-	8 x 6	14 x 8	P10	-	4-3/16	-	1-1/4	5/16	1
SS 856-K2	10 X 6	18 X 10	-	-	10 X 8	16 X 8	P10	-	6-5/16	-	2-1/4	1/2	1
SS 856-K24	-	-	18 x 10	24 x 10	-	-	P10	-	7-1/4	-	2-1/2	5/8	1
SS 2857-K44	-	-	18 x 10	24 x 10	-	-	P13	-	12	-	3-1/2	1/2	1

* Some chain punches may incur additional punching charges. Contact Maxi-Lift for details.

PUNCHING: CONTINUOUS ELEVATOR BUCKETS ON "K" ATTACHMENTS

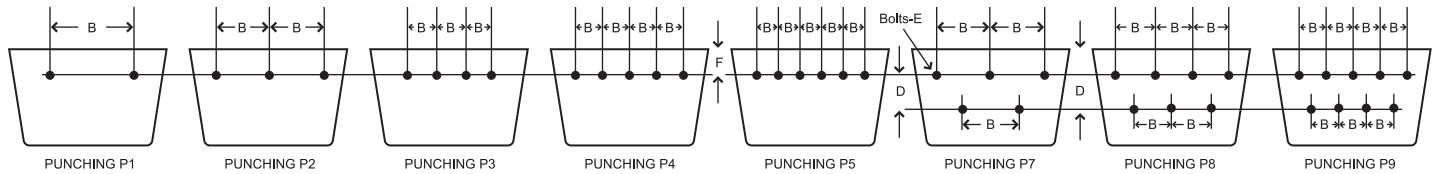


CHAIN ATTACHMENT NUMBER	NOMINAL BUCKET SIZE, INCHES								PUNCHING	INCHES				
	TYPE HF		TYPE HFO		TYPE MF		TYPE LF			B	C	D	E	G
	Min.	Max.	Min.	Max.	Min.	Max.	Min.	Max.						
C 102B-K2	8 x 5	10 x 5	8 x 5	10 x 5	8 x 5	10 x 5	-	-	P10	5-5/16	-	1-3/4	3/8	1-7/8
SS 102B-K2	8 x 5	10 x 5	8 x 5	10 x 5	8 x 5	10 x 5	-	-	P10	5-5/16	-	1-3/4	3/8	1-7/8
C 102B-1/2-K2	8 x 5	10 x 5	8 x 5	10 x 5	8 x 5	10 x 5	-	-	P10	5-5/16	-	1-3/4	1/2	1-7/8
SS 102B-1/2-K2	8 x 5	10 x 5	8 x 5	10 x 5	8 x 5	10 x 5	-	-	P10	5-5/16	-	1-3/4	1/2	1-7/8
C 110-K2	10 x 7	16 x 8	10 x 7	16 x 8	10 x 7	18 x 8	10 x 7	16 x 8	P10	5-5/16	-	1-3/4	3/8	3-3/8
SS 110-K2	10 x 7	16 x 8	10 x 7	16 x 8	10 x 7	18 x 8	10 x 7	16 x 8	P10	5-5/16	-	1-3/4	3/8	3-3/8
C 111-K2	10 x 6	12 x 6	10 x 6	12 x 6	10 x 6	12 x 6	10 x 6	12 x 6	P10	6-1/4	-	2-5/16	1/2	2-3/32
SS 111-K2	10 x 6	12 x 6	10 x 6	12 x 6	10 x 6	12 x 6	10 x 6	12 x 6	P10	6-1/4	-	2-5/16	1/2	2-3/32
C 132-K2	10 x 7	16 x 8	10 x 7	16 x 8	12 x 7	20 x 8	12 x 7	20 x 8	P10	7-1/2	-	2-3/4	1/2	2-7/8
SS 150PLUS-K2	10 x 7	16 x 8	10 x 7	16 x 8	12 x 7	20 x 8	12 x 7	20 x 8	P10	7-1/2	-	2-3/4	1/2	2-7/8
SS 856-K2	10 x 7	16 x 8	10 x 7	16 x 8	12 x 7	20 x 8	12 x 7	20 x 8	P10	6-5/16	-	2-1/4	3/8	3-1/8

Other Chain Punches Available. **Verify Bucket Punching Before Ordering.**

BUCKET PUNCHING: BELTS

For More Information, Call 1-800-527-0657



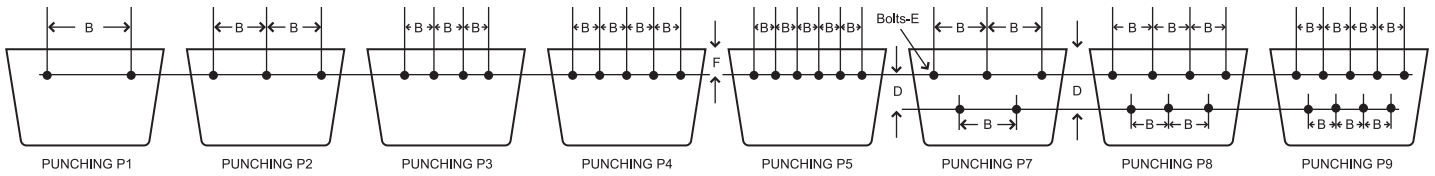
PUNCHING: TYPES HF, HFO, MF AND LF

TYPES HF, HFO, MF AND LF CONTINUOUS ELEVATOR BUCKETS FOR BELTS								
BUCKET SIZE, INCHES			PUNCHING	BELT WIDTH INCHES	INCHES			
L - Length	P - Proj	D - Depth			B	D	E	F
8	5	7-3/4	P7	9-10	3	1	1/4	3-3/8
8	5	8-1/2	P7	9-10	3	1	1/4	3-3/4
9	6	9-1/4	P7	10	3	1	1/4	4-1/8
10	5	7-3/4	P7	11-12	3-1/2	1	5/16	3-3/8
10	5	8-1/2	P7	11-12	3-1/2	1	5/16	3-3/4
10	6	9-1/4	P7	11-12	3-1/2	1	5/16	4-1/8
10	6	10	P7	11-12	3-1/2	1	5/16	4-1/2
10	7	11-5/8	P7	11-12	3-1/2	1	5/16	5-5/16
10	7	12-1/2	P7	11-12	3-1/2	1	5/16	5-3/4
10	8	11-5/8	P7	11-12	3-1/2	1	5/16	5-5/16
11	6	9-1/4	P7	12	4	1	5/16	4-1/8
12	5	7-3/4	P7	13-14	4-1/2	1	5/16	3-3/8
12	6	9-1/4	P7	13-14	4-1/2	1	5/16	4-1/8
12	6	10	P7	13-14	4-1/2	1	5/16	4-1/2
12	7	11-5/8	P7	13-14	4-1/2	1	5/16	5-5/16
12	7	11-3/4	P7	13-14	4-1/2	1	5/16	5-3/8
12	7	12-1/2	P7	13-14	4-1/2	1	5/16	5-3/4
12	8	11-5/8	P7	13-14	4-1/2	1	5/16	5-5/16
12	8	12-1/2	P7	13-14	4-1/2	1	5/16	5-3/4
14	7	11-5/8	P8	15-16	4	1	5/16	5-5/16
14	7	12-1/2	P8	15-16	4	1	5/16	5-3/4
14	8	11-5/8	P8	15-16	4	1	5/16	5-5/16
14	8	11-3/4	P8	15-16	4	1	5/16	5-3/8
14	8	12-1/2	P8	15-16	4	1	5/16	5-3/4
16	7	11-3/4	P8	18	4-1/2	1	5/16	5-3/8
16	8	11-5/8	P8	18	4-1/2	1	5/16	5-5/16
16	8	12-1/2	P8	18	4-1/2	1	5/16	5-3/4
16	12	17-5/8	P8	18	4-1/2	1	5/16	8-5/16
16	12	18-5/8	P8	18	4-1/2	1	5/16	8-13/16
18	8	11-5/8	P8	20	5	1	5/16	5-5/16
18	10	15	P8	20	5	1	5/16	7
20	8	11-5/8	P9	22	4	1	5/16	5-5/16
20	12	17-5/8	P9	22	4	1	5/16	8-5/16
20	12	18-5/8	P9	22	4	1	5/16	8-13/16
24	10	11-5/8	P9	26	5	1	5/16	5-5/16
24	12	17-5/8	P9	26	5	1	5/16	8-5/16
24	12	18-5/8	P9	26	5	1	5/16	8-13/16

All plastic Maxi-Tuff MF Buckets that have a depth of 11-1/2", 11-5/8" or 11-3/4" will be punched with a 5-5/16" down dimension (F).

BUCKET PUNCHING: BELTS

For More Information, Visit WWW.MAXILIFT.COM



PUNCHING: TYPES AA, TIGER-TUFF AND TIGER-CC INDUSTRIAL

TYPES AA, TIGER-TUFF & TIGER-CC INDUSTRIAL CENTRIFUGAL DISCHARGE ELEVATOR BUCKETS FOR BELTS

NOMINAL BUCKET LENGTH INCHES	PUNCHING	BELT WIDTH INCHES	B	D	E	F
3	P1	4	1-3/8	—	1/4	1
4	P1	5	2-5/16	—	1/4	1
5	P1	6	3-3/16	—	1/4	1
6	P1	7-8	4-3/8	—	1/4	1
7	P2	8	2-1/2	—	1/4	1
8	P7	9-10	3	1	1/4	1
9	P7	10	3	1	1/4	1
10	P7	11-12	3-1/2	1	5/16	1
11	P7	12	4	1	5/16	1
12	P7	13-14	4-1/2	1	5/16	1
13	P8	14	3-1/2	1	5/16	1
14	P8	15-16	4	1	5/16	1
15	P8	16	4	1	5/16	1
16	P8	18	4-1/2	1	5/16	1
17	P8	18	4-1/2	1	5/16	1
18	P8	20	5	1	5/16	1
19	P9	20	4	1	5/16	1
20	P9	22	4	1	5/16	1
21	P9	22	4-1/2	1	5/16	1
22	P9	24	4-1/2	1	5/16	1
23	P9	24	5	1	5/16	1
24	P9	26	5	1	5/16	1

Other Belt Punches Available. **Verify Bucket Punching Before Ordering.**