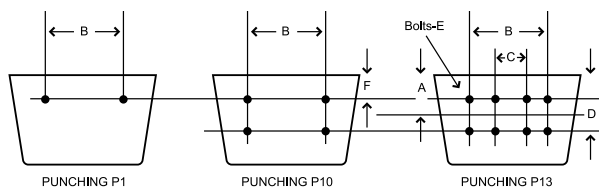
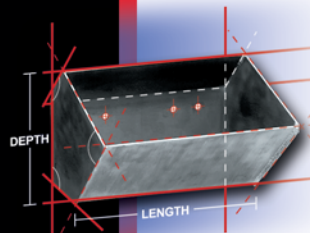
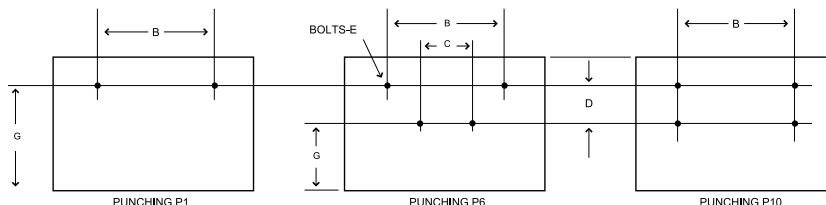


BUCKET PUNCHING FOR CHAINS



CENTRIFUGAL DISCHARGE ELEVATOR BUCKETS ON "K" ATTACHMENTS

CHAIN ATTACHMENT NUMBER	NOMINAL BUCKET SIZE, INCHES						PUNCHING	INCHES					
	TYPES AA, AA-RB		TYPE AC		TYPE SC			A	B	C	D	E	F
	Min.	Max.	Min.	Max.	Min.	Max.							
77-K1	6 X 4	10 X 6	-	-	8 X 6	10 X 8	P1	-	3	-	-	1/4	1
77-K2	6 X 4	10 X 6	-	-	8 X 6	10 X 8	P10	-	3	-	13/16	1/4	1
C 77-K1	6 X 4	10 X 6	-	-	8 X 6	10 X 8	P1	-	3	-	-	3/8	1
78-K1	6 X 4	10 X 6	-	-	8 X 6	10 X 8	P1	-	3-3/8	-	-	1/4	1
H 78-K1	6 X 4	12 X 6	-	-	8 X 6	12 X 8	P1	-	4	-	-	3/8	1
H 78-K2	6 X 4	12 X 6	-	-	8 X 6	12 X 8	P10	-	4	-	1-1/8	3/8	1
C 102B-K2	8 X 5	16 X 7	-	-	8 X 6	16 X 8	P10	-	5-5/16	-	1-3/4	3/8	1
SS 102B-K2	7 X 4-1/2	16 X 7	-	-	8 X 6	16 X 8	P10	-	5-5/16	-	1-3/4	3/8	1
C 102-1/2-K2	8 X 5	16 X 7	-	-	8 X 6	16 X 8	P10	-	5-5/16	-	1-3/4	1/2	1
SS 102-1/2-K2	8 X 5	16 X 7	-	-	8 X 6	16 X 8	P10	-	5-5/16	-	1-3/4	1/2	1
C 110-K2	8 X 5	16 X 7	-	-	8 X 6	16 X 8	P10	-	5-5/16	-	1-3/4	3/8	1
SS 110-K2	8 X 5	16 X 7	-	-	8 X 6	16 X 8	P10	-	5-5/16	-	1-3/4	3/8	1
C111-K2	9 X 6	18 X 8	-	-	10 X 8	16 X 8	P10	-	6-1/4	-	2-5/16	1/2	1
SS 111-K2	10 X 6	18 X 8	-	-	10 X 8	16 X 8	P10	-	6-1/4	-	2-5/16	1/2	1
C 132-K2	12 X 6	20 X 8	-	-	12 X 8	16 X 8	P10	-	7-1/2	-	2-3/4	1/2	1
188-K1	6 X 4	12 X 6	-	-	8 X 6	12 X 8	P1	-	3-3/4	-	-	3/8	1
C 188-K2	6 X 4	14 X 7	-	-	8 X 6	14 X 8	P10	-	4-3/16	-	1-1/4	5/16	1
SS 188-K1	6 X 4	12 X 6	-	-	8 X 6	12 X 8	P1	-	3-3/4	-	-	3/8	1
SS 188-K2	8 X 5	14 X 7	-	-	8 X 6	14 X 8	P10	-	4-3/16	-	1-1/4	5/16	1
SS 856-K2	10 X 6	18 X 10	-	-	10 X 8	16 X 8	P10	-	6-5/16	-	2-1/4	1/2	1
SS 856-K24	-	-	18 X 10	24 X 10	-	-	P10	-	7-1/4	-	2-1/2	5/8	1
SS 2857-K44	-	-	18 X 10	24 X 10	-	-	P13	-	12	-	3-1/2	1/2	1



CONTINUOUS ELEVATOR BUCKETS ON "K" ATTACHMENTS

CHAIN ATTACHMENT NUMBER	NOMINAL BUCKET SIZE, INCHES								PUNCHING	INCHES				
	TYPE HF		TYPE HFO		TYPE MF		TYPE LF			B	C	D	E	G
	Min.	Max.	Min.	Max.	Min.	Max.	Min.	Max.						
C 102B -K2	8 X 5	10 X 5	8 X 5	10 X 5	8 X 5	10 X 5	-	-	P10	5-5/16	-	1-3/4	3/8	1-7/8
SS 102B-K2	8 X 5	10 X 5	8 X 5	10 X 5	8 X 5	10 X 5	-	-	P10	5-5/16	-	1-3/4	3/8	1-7/8
C 102B-1/2-K2	8 X 5	10 X 5	8 X 5	10 X 5	8 X 5	10 X 5	-	-	P10	5-5/16	-	1-3/4	1/2	1-7/8
SS 102B-1/2-K2	8 X 5	10 X 5	8 X 5	10 X 5	8 X 5	10 X 5	-	-	P10	5-5/16	-	1-3/4	1/2	1-7/8
C 110-K2	10 X 7	16 X 8	10 X 7	16 X 8	10 X 7	18 X 8	10 X 7	16 X 8	P10	5-5/16	-	1-3/4	3/8	3-3/8
SS 110-K2	10 X 7	16 X 8	10 X 7	16 X 8	10 X 7	18 X 8	10 X 7	16 X 8	P10	5-5/16	-	1-3/4	3/8	3-3/8
C 111-K2	10 X 6	12 X 6	10 X 6	12 X 6	10 X 6	12 X 6	10 X 6	12 X 6	P10	6-1/4	-	2-5/16	1/2	2-3/32
SS 111-K2	10 X 6	12 X 6	10 X 6	12 X 6	10 X 6	12 X 6	10 X 6	12 X 6	P10	6-1/4	-	2-5/16	1/2	2-3/32
C 132-K2	10 X 7	16 X 8	10 X 7	16 X 8	12 X 7	20 X 8	12 X 7	20 X 8	P10	7-1/2	-	2-3/4	1/2	2-7/8
SS 150PLUS-K2	10 X 7	16 X 8	10 X 7	16 X 8	12 X 7	20 X 8	12 X 7	20 X 8	P10	7-1/2	-	2-3/4	1/2	2-7/8
SS 856-K2	10 X 7	16 X 8	10 X 7	16 X 8	12 X 7	20 X 8	12 X 7	20 X 8	P10	6-5/16	-	2-1/4	3/8	3-1/8

Other Chain Punches Available. Verify bucket punching before ordering.

Call: 1-800-527-0657 or Visit Us Online at: www.maxlift.com

16400 Midway Rd Dallas, TX 75001 • Ph: (972)735-8855 Fx: (972)735-8896 • info@maxlift.com